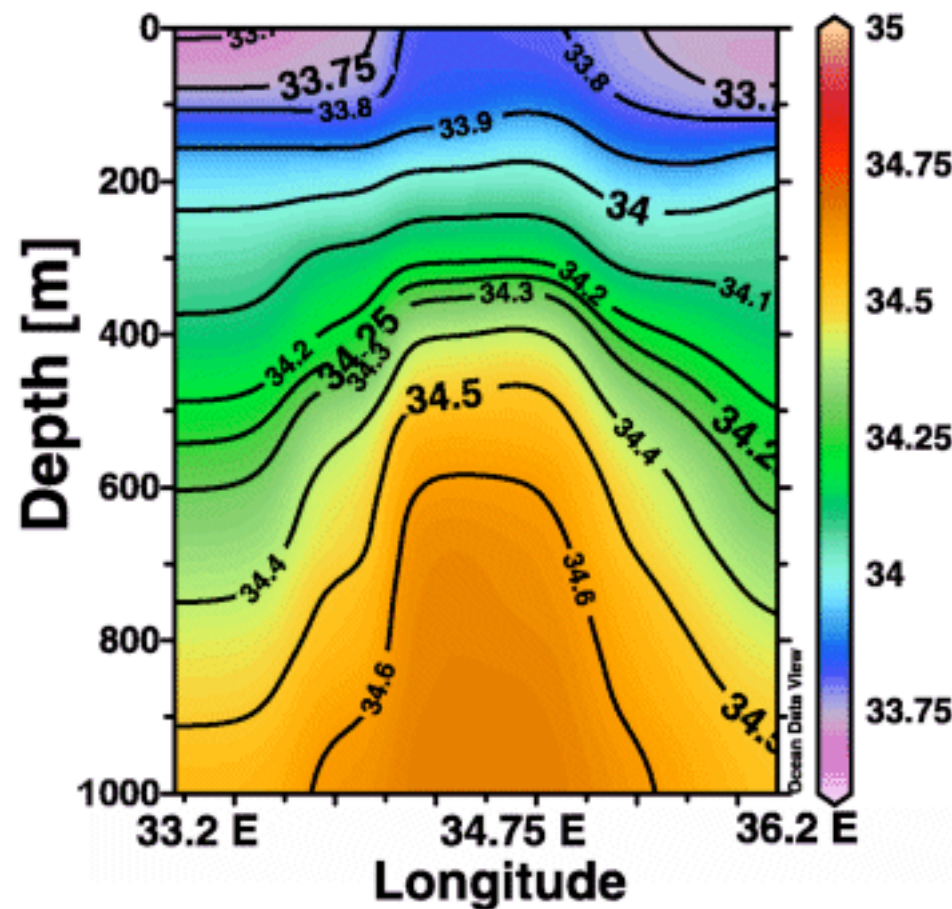


Here's a E/W section across an eddy, near 50S.

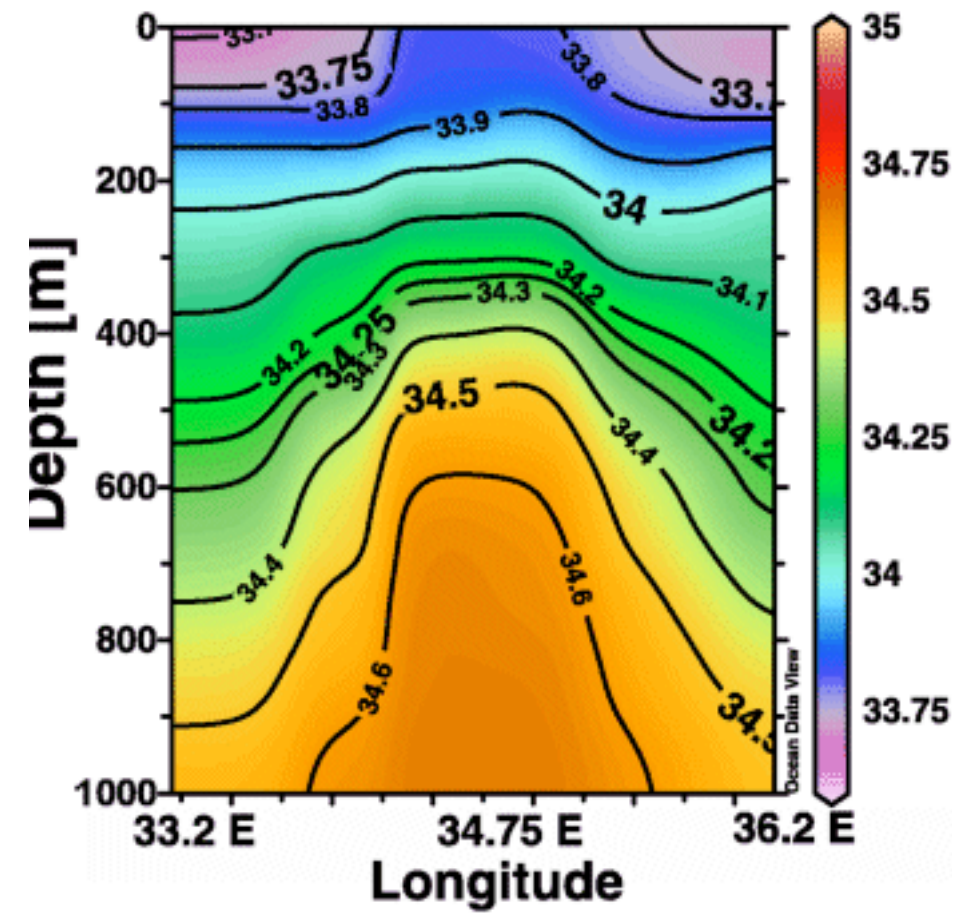


1. Using the thermal wind relations and a deep level of no motion, sketch the geostrophic velocity.

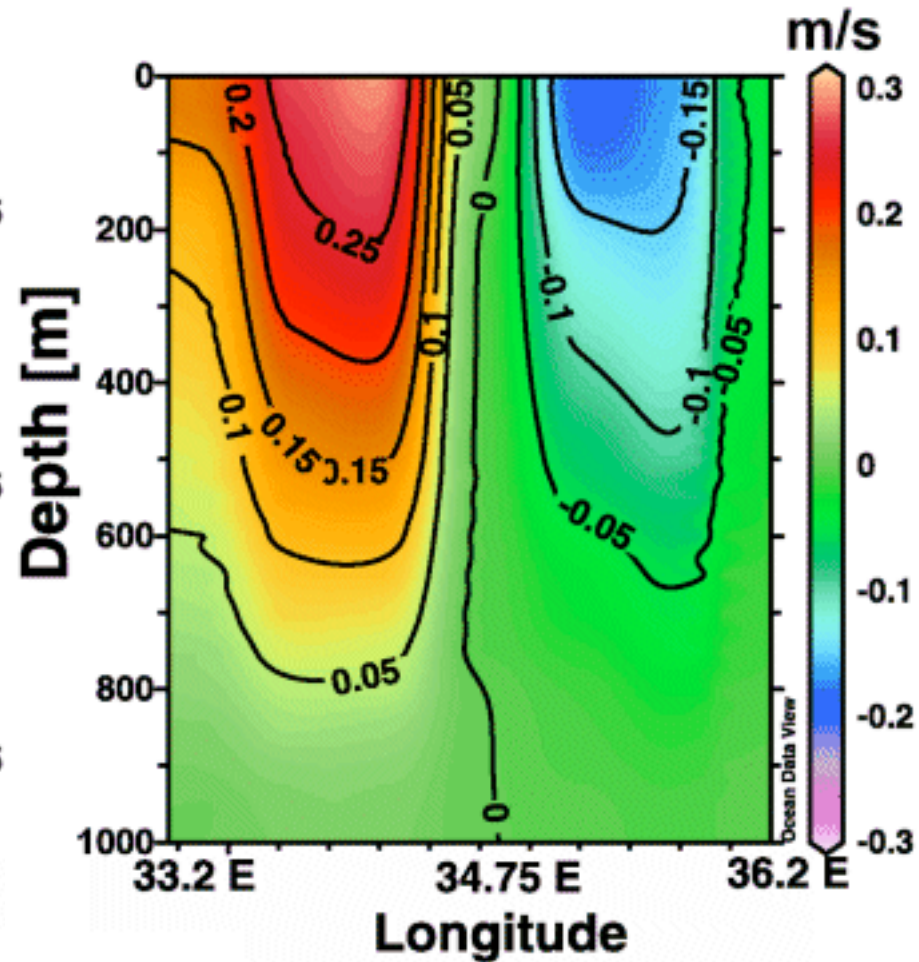
2. Looking at the surface velocity pattern, sketch the approximate sea surface height.

Assume salinity (above)
is a proxy for density.

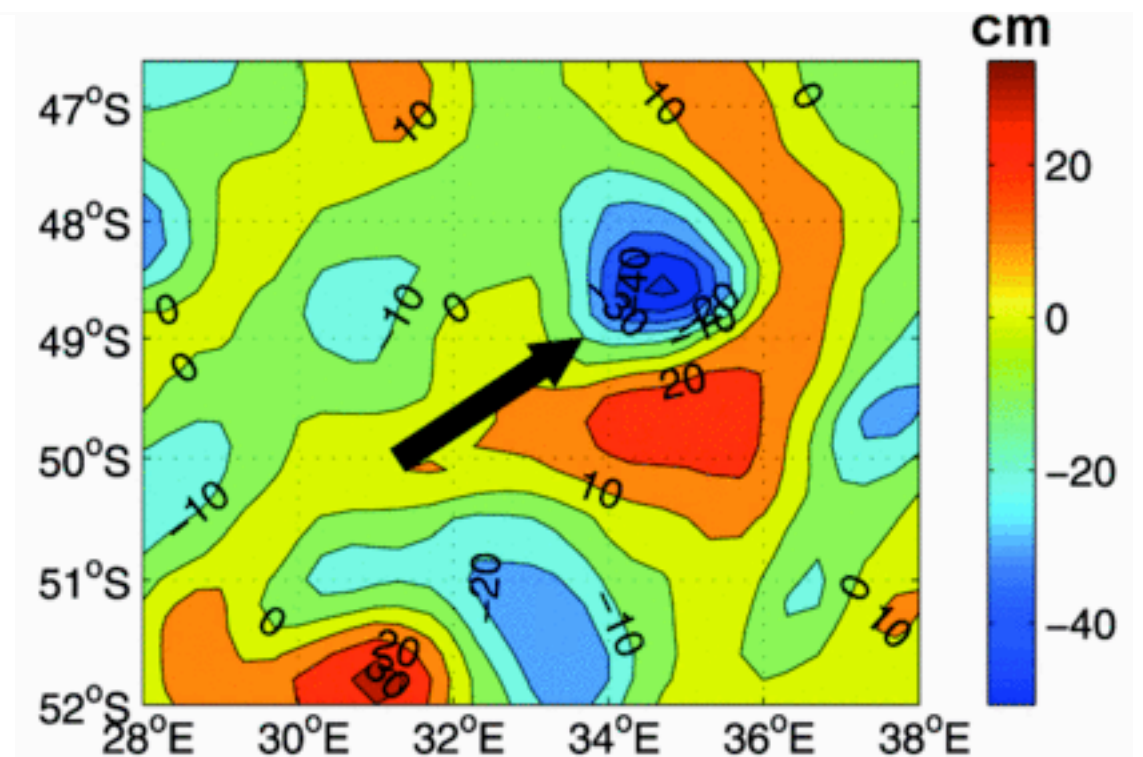
Salinity



Velocity



Sea surface height from space



Swart et al 08 (JGR)