

The Human Earth (MAE 124/ESYS 103)

Lecture 14

Transportation

Light Rail and UCSD



http://www.sdcommute.com/Major_Projects/Mid_Coast/studyFeatures.asp

Light Rail and UCSD (2)



MTDB Mid-Coast Strategic Transportation Study URS

Figure X2
UCSD West - LRT Side Running - Executive

http://www.sdcommute.com/Major_Projects/Mid_Coast/studyFeatures.asp

Model Planning for Public Transit: Curitiba, Brazil



<http://en.wikipedia.org/wiki/Curitiba>

Curitiba Bus Network

Curitiba

Linhas Expresso Biarticulado

- 201 Santa Cândida – Capão Raso
- 301 Pinhal – Riol Barbosa
- 302 Centenário – Riol Barbosa
- 303 Centenário – Campo Comprido
- 502-503 Circular Sul (horário / anti-horário)
- 504 Boqueirão
- 603 Pinhalzinho



Curitiba

Linhas Direta

- 022 Inter 2 (horário / anti-horário)
- 105 Tamandaré – Cabral
- 204 Pinhalzinho – S. Cândida
- 206 Barreirinha – São José
- 208 Azevedo
- 209 Pinhal – Campo Comprido
- 205 Centenário
- 307 Santa Felicidade – Bairro Alto
- 469 Centro Politécnico
- 505 Boqueirão – Centro Cívico
- 506 Bairro Novo
- 507-508 Sítio Cercado (horário / anti-horário)
- 605 Fazenda Rio Grande
- 606 Associação – Curitiba
- 607 Colombo / CIC
- 702 Fazendinha – Tamandaré
- 805 Campo Largo – Cabral



Mapa e design: M. Oshiro/Arquitetura e Design/psa.com.br
 data: October 2005

<http://en.wikipedia.org/wiki/Curitiba>

Curitiba Bus Stations



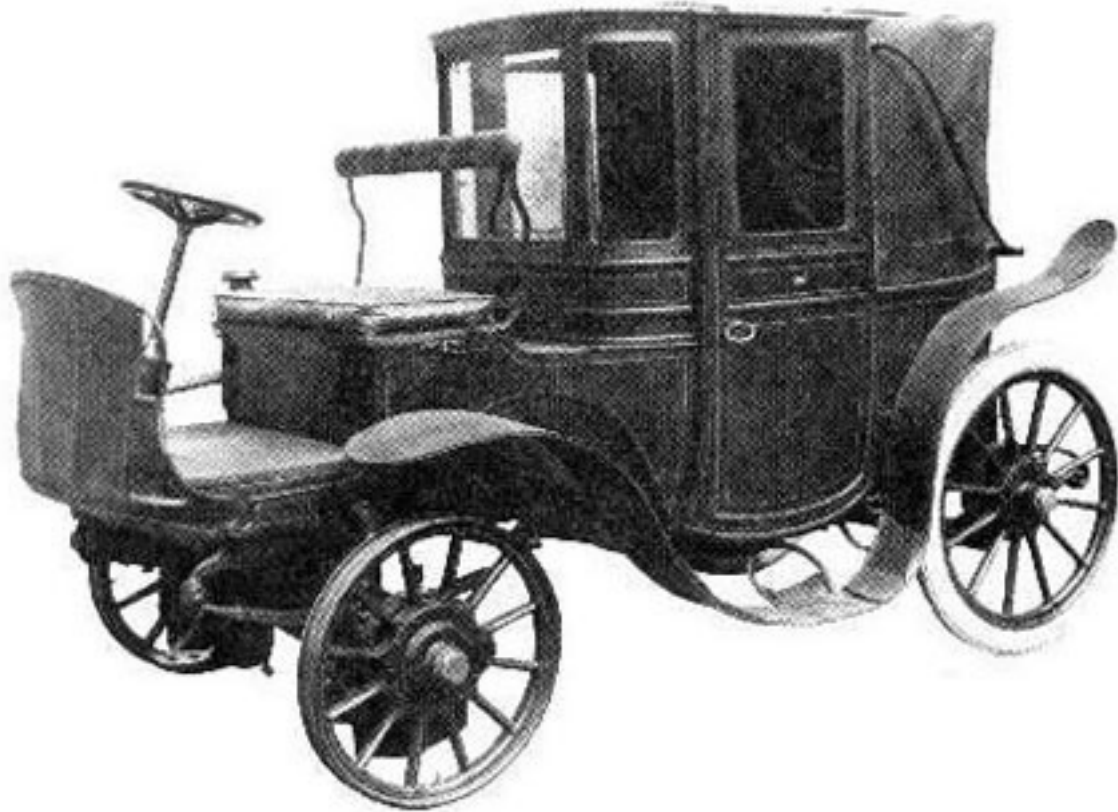
<http://urbanhabitat.org/node/344>

Hybrids: Fuel Efficiency

<http://www.cartoonistgroup.com/store/add.php?iid=12806>

<http://www.cartoonistgroup.com/store/add.php?iid=12806>

Early Hybrids: Krieger Company, 1903



<http://www.hybridcars.com>

Hybrids



<http://www.hybridcars.com>